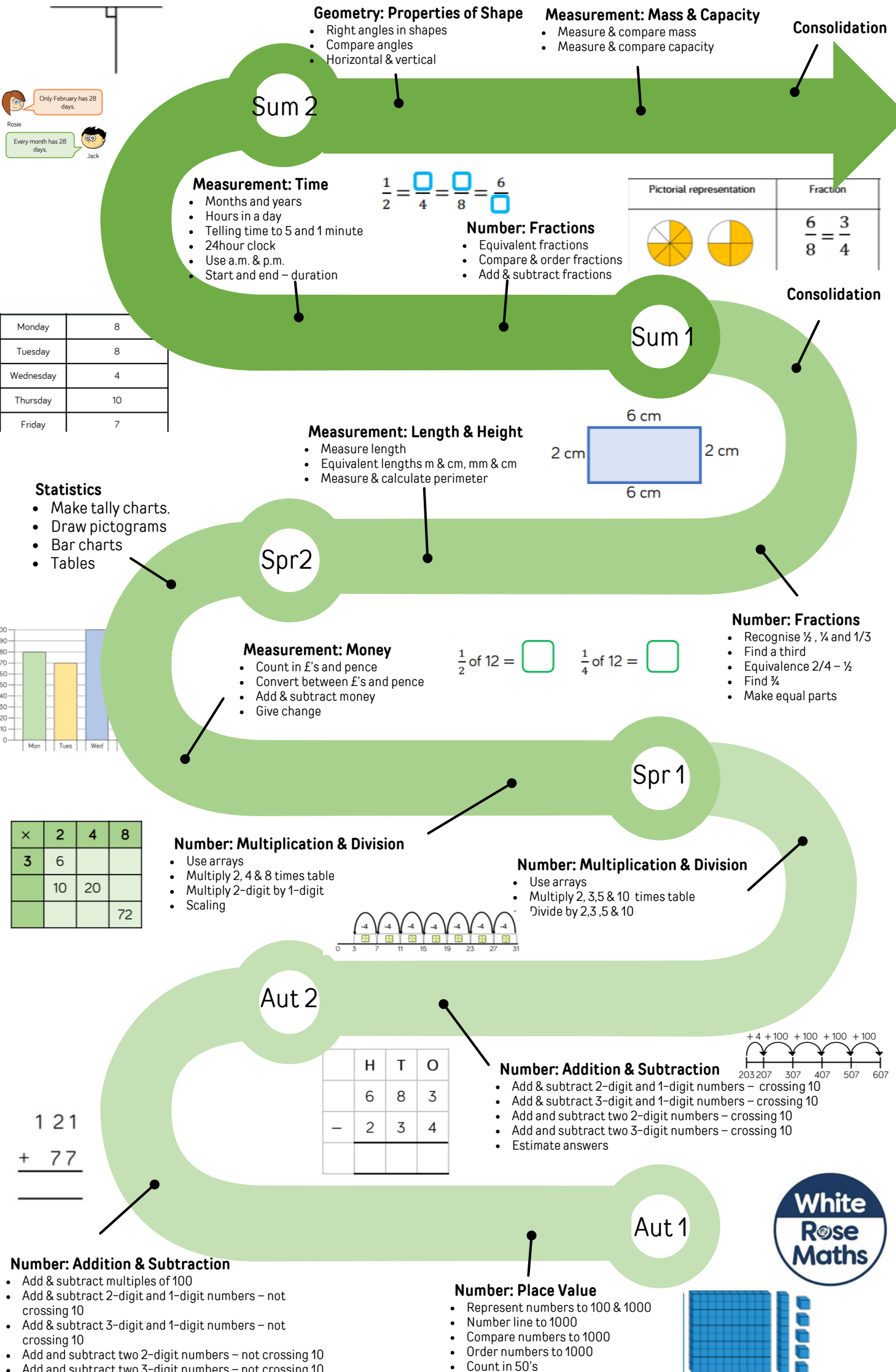


Year Three Maths Overview



Geometry: Properties of Shape

- Right angles in shapes
- Compare angles
- Horizontal & vertical

Measurement: Mass & Capacity

- Measure & compare mass
- Measure & compare capacity

Consolidation

Sum 2

Measurement: Time

- Months and years
- Hours in a day
- Telling time to 5 and 1 minute
- 24hour clock
- Use a.m. & p.m.
- Start and end – duration

$$\frac{1}{2} = \frac{\square}{4} = \frac{\square}{8} = \frac{6}{\square}$$

Number: Fractions

- Equivalent fractions
- Compare & order fractions
- Add & subtract fractions

Pictorial representation	Fraction
	$\frac{6}{8} = \frac{3}{4}$

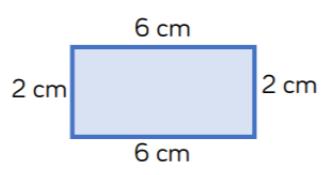
Rosie: Only February has 28 days.
Jack: Every month has 28 days.

Monday	8
Tuesday	8
Wednesday	4
Thursday	10
Friday	7

Sum 1

Measurement: Length & Height

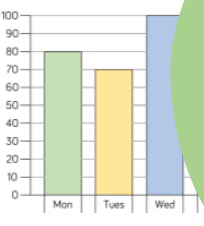
- Measure length
- Equivalent lengths m & cm, mm & cm
- Measure & calculate perimeter



Consolidation

Statistics

- Make tally charts.
- Draw pictograms
- Bar charts
- Tables



Spr 2

Measurement: Money

- Count in £'s and pence
- Convert between £'s and pence
- Add & subtract money
- Give change

$$\frac{1}{2} \text{ of } 12 = \square \quad \frac{1}{4} \text{ of } 12 = \square$$

Number: Fractions

- Recognise $\frac{1}{2}$, $\frac{1}{4}$ and $\frac{1}{3}$
- Find a third
- Equivalence $\frac{2}{4} = \frac{1}{2}$
- Find $\frac{3}{4}$
- Make equal parts

Spr 1

Number: Multiplication & Division

- Use arrays
- Multiply 2, 4 & 8 times table
- Multiply 2-digit by 1-digit
- Scaling

×	2	4	8
3	6		
	10	20	
			72

Number: Multiplication & Division

- Use arrays
- Multiply 2, 3, 5 & 10 times table
- Divide by 2, 3, 5 & 10

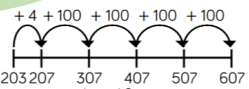


Aut 2

	H	T	O
	6	8	3
-	2	3	4

Number: Addition & Subtraction

- Add & subtract 2-digit and 1-digit numbers – crossing 10
- Add & subtract 3-digit and 1-digit numbers – crossing 10
- Add and subtract two 2-digit numbers – crossing 10
- Add and subtract two 3-digit numbers – crossing 10
- Estimate answers



$$\begin{array}{r} 121 \\ + 77 \\ \hline \end{array}$$

Aut 1

Number: Addition & Subtraction

- Add & subtract multiples of 100
- Add & subtract 2-digit and 1-digit numbers – not crossing 10
- Add & subtract 3-digit and 1-digit numbers – not crossing 10
- Add and subtract two 2-digit numbers – not crossing 10
- Add and subtract two 3-digit numbers – not crossing 10

Number: Place Value

- Represent numbers to 100 & 1000
- Number line to 1000
- Compare numbers to 1000
- Order numbers to 1000
- Count in 50's

